



WITHLACOOCHEE REGIONAL WATER SUPPLY AUTHORITY

**Charles A. Black Wellfield
Contract for Water Supply
March 18, 2026**

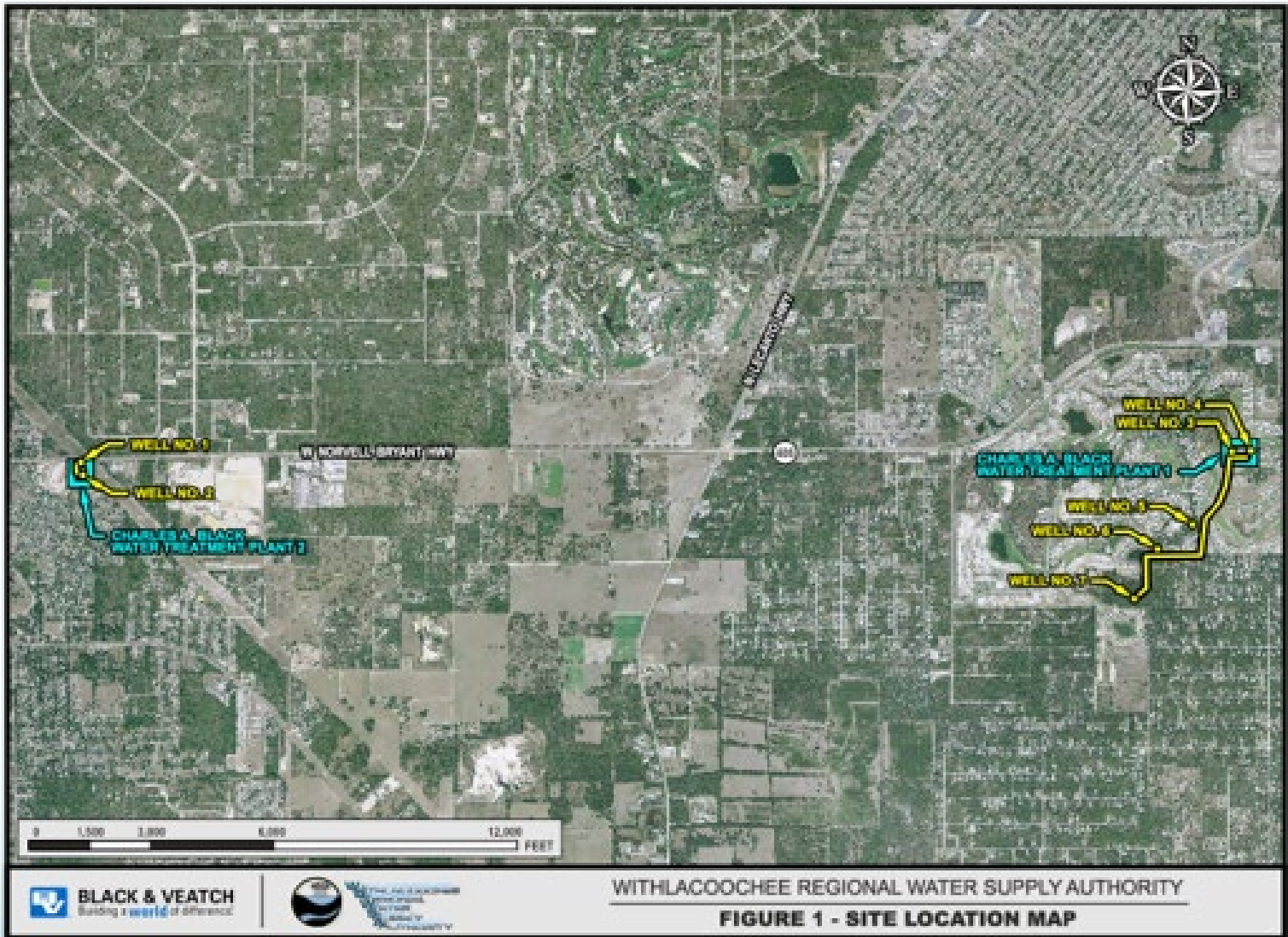
Contract Summary

- Approved October 2016 between Citrus County and WRWSA
- Provides for operation, maintenance, alteration, replacement and expansion of the Charles A Black water supply facilities
- Automatic Renewal Subject to: County 6-month notice to not renew, or County 12-month notice to cancel

WATER SUPPLY CONTRACT
between the
WITHLACOOCHEE REGIONAL
WATER SUPPLY AUTHORITY
and
CITRUS COUNTY, FLORIDA



WITHLACOOCHEE
REGIONAL
WATER
SUPPLY
AUTHORITY



- Seven production wells, two treatment facilities and storage tanks
- Permitted for 7.1819 MGD



Contract Allocates Responsibilities

Citrus County

- Operation and Maintenance
- Permit Compliance
- Water Metering for Supply
- Permit Renewal
- Administer R & R Funds

WRWSA

- Coordination and Inspection
- Permit Renewal
- Accept R & R Fund report annually



Financial Provisions - Water Rate

- Volumetric Rate - \$0.1335 per thousand gallons
- Paid Monthly by Citrus County to WRWSA
- Annual COLA adjustment based on:
 - “[b]eginning in the first full Contract Year, the Authority shall apply a cost of living adjustment to the rate set forth in Section 10.1 on an annual basis. The Adjustment shall be equal to the annual adjustment that the County applies to its customers’ rates, not to exceed three percent (3%).”
- Current FY 2025-26 Rate is \$0.1595/1000 gallons
 - 19% change since 2016



Financial Provisions - Water Rate

- Minimum annual charge: \$224,000
- FY2024-25 actual annual charge: \$343,357



Financial Provisions - R & R Fund

- Paid and held in trust by County, owned by WRWSA
- Dedicated to replace and renew Charles A Black facilities
- \$180,000/year Deposited
- Increased to \$270,000/year in 2022
- Maintain Balance \$2,000,000 - \$3,000,000
- At the end of FY 2024-25 the Balance was \$2,782,592



Next Steps

- 10-year Charles A Black Water Supply Contract Renewal Period Commences October 2026.
- 5-year R&R adjustment after Engineering Evaluation later this year
- Annual rate adjustments per COLA